

MOVEABLE HOIST SYSTEM COMPACT, ROBUST AND RELIABLE HEAVY-LOAD SYSTEM

FOR THE TRANSPORT OF LARGE AND HEAVY LOADS IN PAINT SHOPS AND DURING INSTALLATION WORK.

Space-saving and process-safe transport system

The Moveable Hoist System has been especially developed for the process-safe transport of large and heavy loads during surface treatment and installation work. As a standard, the carrier set is rated for the transport of parts up to 10,000 kg in weight, however even higher loads can be transported if necessary. The modular conveyor system can travel both longitudinally and transversely and consists of passive trolleys and transfer bridges in any combination. The passive trolleys and passive carrier sets ensure high process reliability because due to their design and construction no functional components are necessary in the hot temperature area, for example.

Flexible functionalities

The stationary frequency-controlled motors of the drives provide gentle acceleration and braking. Various plant areas can be flexibly served, i.e. the sequence or colors can be sorted and certain plant areas can also be served twice. The transfer to various treatment zones is performed by transfer bridges, which are equipped with telescopic transfer systems. Various treatment times can be easily implemented. Once the workpiece is mounted on the trolley, it can be efficiently transported through the entire production line, saving time and money.

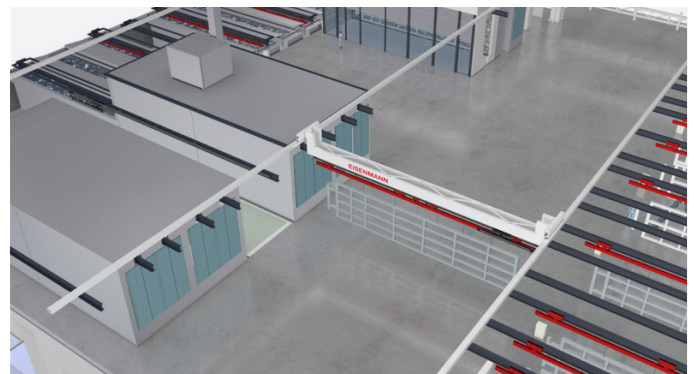
Robust and low maintenance design

A specially developed pivot balances the increased loading when crossing gaps in the rails and thus ensures minimum wear of the trolley rollers and of the load tie-bars. The passive trolleys and transfer bridges are moved by friction wheel drive and transfer systems. Other heavy duty and robust components in combination

with the high manufacturing quality ensure low maintenance operation and long service life of the conveyor system. Especially in relation to the particularly high demands in paint shops, such as humidity, soiling, temperature or EX protection, the most suitable component of the aforementioned robust components can be selected.

Installation and control concept

Tried & tested systems are available for the control of the new heavy duty Moveable Hoist System. Power is supplied via an energy guiding chain or via a traveling control cabinet via conductor rails. Pathways and objectives are coded by means of a binary coded fixed number plate or with transponder systems. In addition, the ESM can be easily integrated in higher-level control systems such as the client's own Manufacturing Execution System E-MES.



Paint shop for trailer – transfer bridge with carrier set.

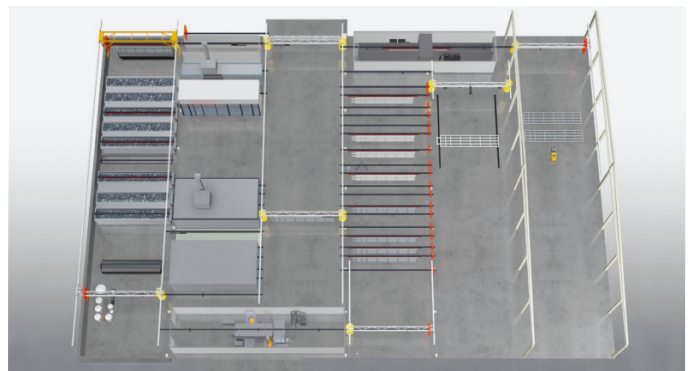
MOVEABLE HOIST SYSTEM COMPACT, ROBUST AND RELIABLE HEAVY-LOAD SYSTEM

Advantages at a glance

- Low investment costs by compact and space saving design
- Modular design enables adaptation to all tasks
- Especially developed pivot minimizes wear of the trolley rollers as well as load tie-bars and thus increases plant availability
- High process reliability and low maintenance effort by standardized components, fewer drives and sensor systems
- Reliable high temperature applications and clean workpieces

Technical data

Load capacity	Max. 10,000 kg
Workpiece lengths	Max. 20 m
Speed	Max. 40 m/min.



Paint shop for trailer – entire plant.

EISENMANN

www.eisenmann.com

Eisenmann GmbH, Tübinger Str. 81, 71032 Böblingen, Germany, Phone: +49 7031 78-0, Fax: +49 7031 78-1000

2021 © Eisenmann GmbH | 05-2021

All rights reserved. All text, images, photos and graphics are subject to copyright and other intellectual property laws. Content may only be used with the express permission of Eisenmann GmbH. All content, including, without limitation, specifications, descriptions and illustrations, are subject to error and change, in particular with regard to ongoing development of our products in line with technological progress. Changes to content will not be proactively communicated. Technical specifications may vary from country to country.