



SIMPLE, SUSTAINABLE, EFFICIENT

Experience the dry
separation system E-Cube
– mobile and in augmented
reality!



EXPERIENCE E-CUBE IN AUGMENTED REALITY

THE WAY YOU LIKE!



Download the E-Cube mobile app from the Apple Store or Google Play Store.

Click the linked store buttons or scan the QR codes with your mobile device to go directly to the E-Cube AR app..



Scan this card as a “visual anchor” to open the E-Cube system in augmented reality.



Please keep the card for future use. On the next slide, you will find the “visual anchor” as a printable template in a larger format.

EXPERIENCE E-CUBE IN AUGMENTED REALITY YOU LIKE!

SIMPLE, SUSTAINABLE, EFFICIENT

E-CUBE



EISENMANN



- Download the app
- Scan this card
- Experience E-Cube live

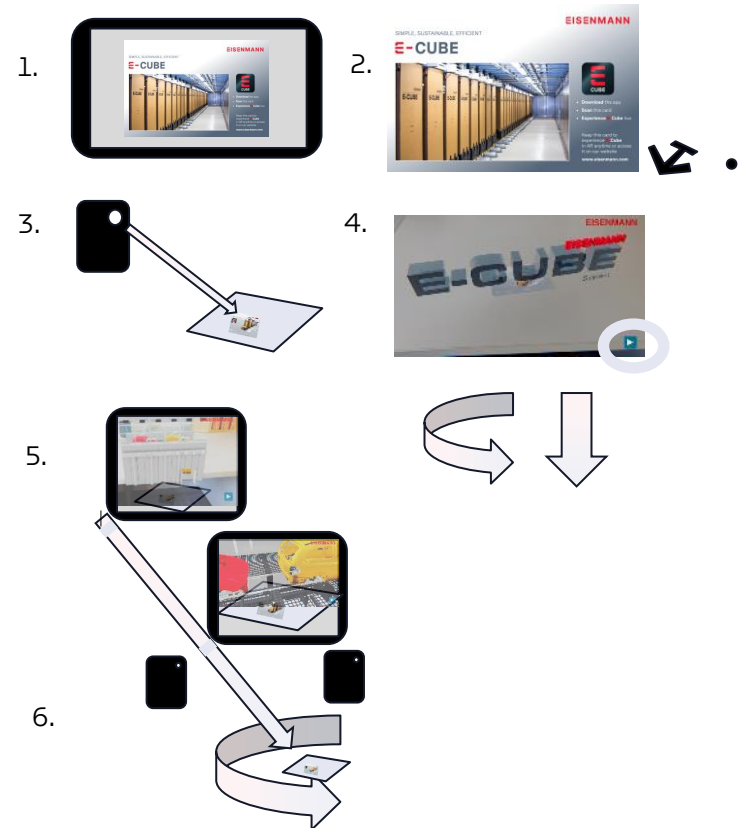
Keep this card to
experience **E-Cube**
in AR anytime or access
it on our website

www.eisenmann.com

E-CUBE

HOW TO USE THE MOBILE AR APP

1. Once the download is complete, install and launch the app.
2. Place the optical “anchor/marker ()” flat in front of you.
3. Point your mobile device's camera at the optical anchor.
4. Use the blue start button to proceed to the next scene.
5. To enter the spray booth virtually, move your device toward the virtual anchor.
6. Move around the spray booth by moving your device around the virtual anchor.
7. Explore the system wherever you are.



E-CUBE

PLANT TECHNOLOGY



Dry scrubber system for overspray

The heart of the paint shop

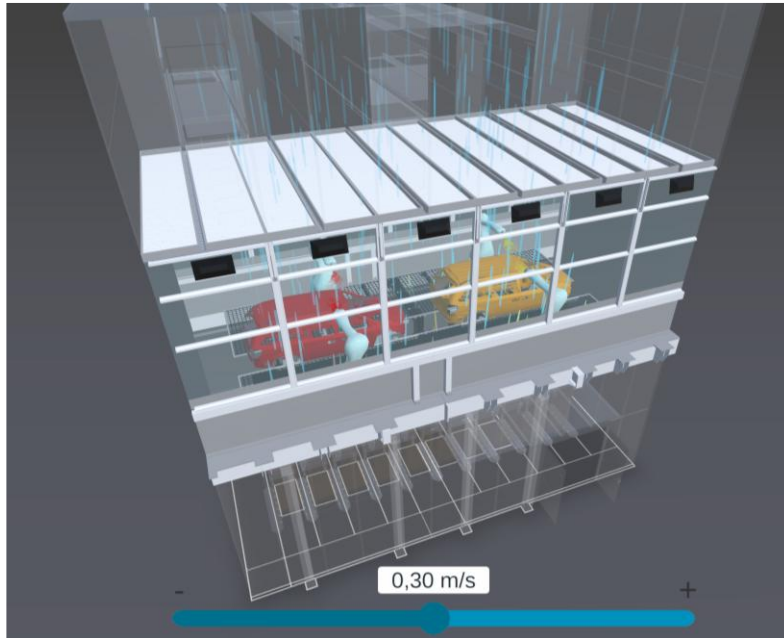
- Paint Booth
- Fresh air supply via Plenum
- Robots and conveying system on grid level
- (Calming room/) expansion room for focus on
- Centralized Filter system

E-Cube

Modular system with 1 module / m booth length

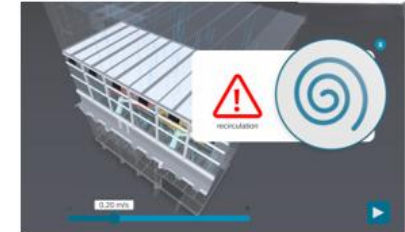
E-CUBE

PLANT TECHNOLOGY



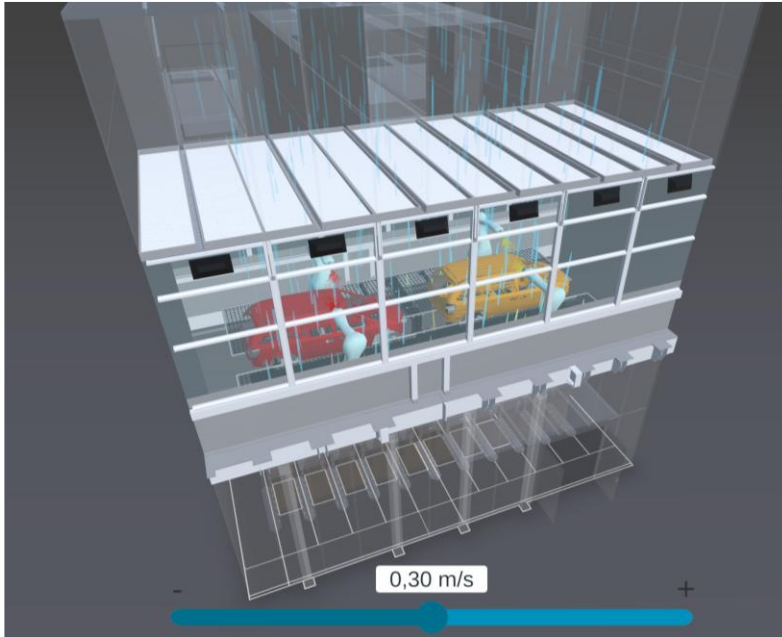
Homogeneous airflow is one of the most important factors for painting quality, alongside temperature and humidity.

- Down velocity is usually $> 0,2$ m/s (to avoid recirculation → drying time for droplets → dust on car body → orange peel)
- $< 0,4$ (to avoid take along effects → runners)
- Homogenous means same down velocity in width and length all through the booth (= $0,35$ m/s)



E-CUBE

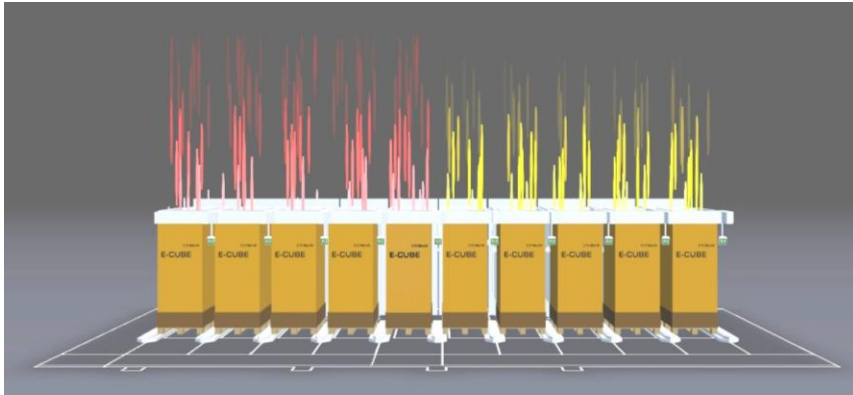
PLANT TECHNOLOGY



- The expansion room (height) is used to focus the flow towards centralized E-Cubes (width) and to enable interaction of E-Cube (length)
- Full filters will take less volume flow than empty ones
- But the overall (sum of all volume flows) flow remains constant (Volume Flow Controlled System)

E-CUBE

PLANT / FILTER TECHNOLOGY



E-Cube filter system is a modular system

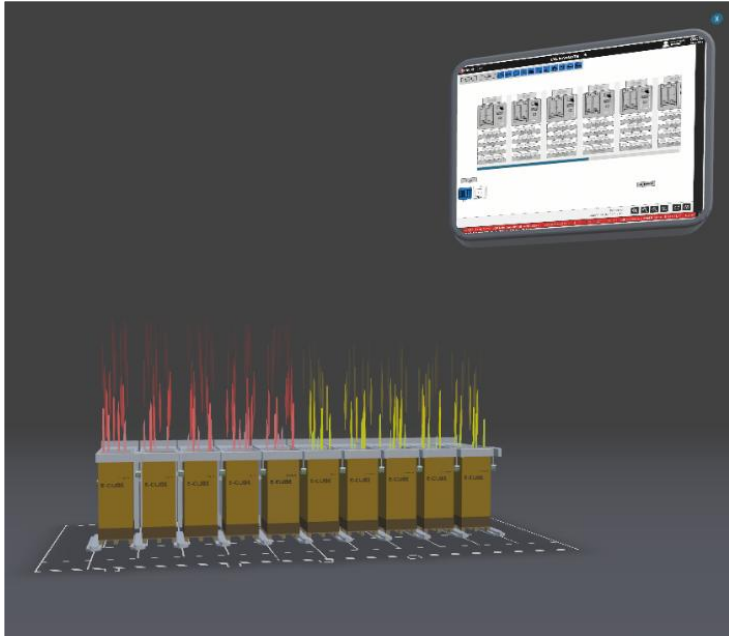
This means 1 module / 1 m booth length

- SIMPLE

- Each docking module measures pressure loss through E-Cube filter, 2nd Filters and an orifice (calculation of volume flow)
 - This enables the calculation of filter resistance ($=Dp/Vstr^2$) and prediction of filter lifetime
 - Visualization of data is realized with PLCs and each module's HMI
- Press PLAY Button to see module's HMI during a full filter (see also Visu)

E-CUBE

PLANT / FILTER TECHNOLOGY



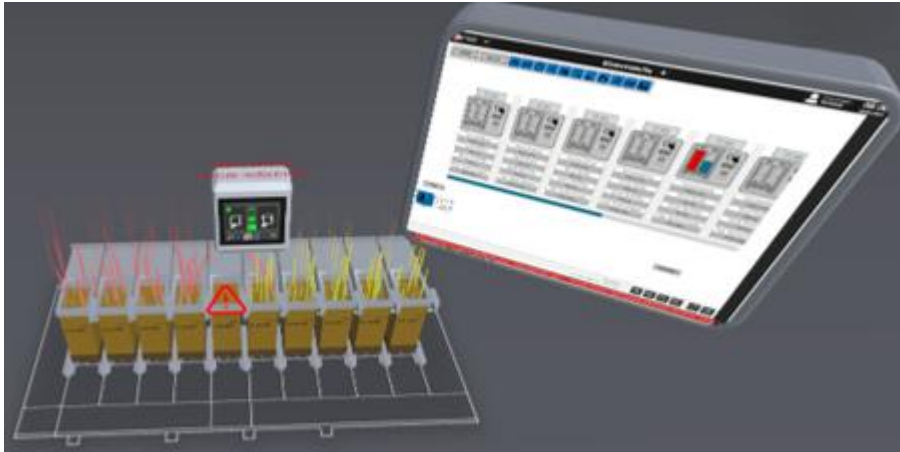
→ Press VISU button:
Use the blue scroll
beam to see all
modules of zone

E-CUBE

PLANT / FILTER TECHNOLOGY

Interaction of filters

- Interaction of filters is system related
- If a filter is full, in extreme cases there is no more volume flow through the filter, the remaining operational modules take over



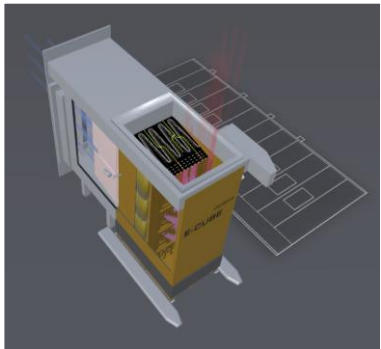
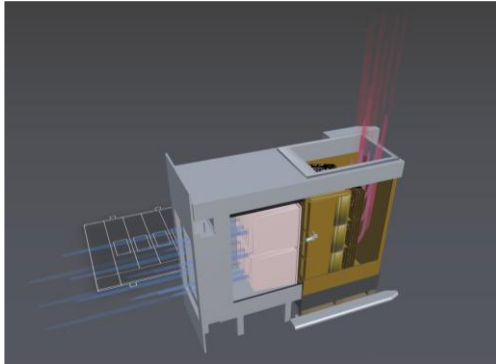
Exchange of filter during production

- To exchange a filter during production, go to the HMI
- Change to un-/docking screen (left mouse button / tip on HMI)
- Once more (left mouse click / tip) onto the HMI to Undock (damper close, pneumatic cylinders open, drawer closes when pulling Cube)
- In reality use then a pallet jack to pull the old E-Cube out and push in the new one

→ SIMPLE

E-CUBE

FILTER TECHNOLOGY



1. Stage:

- E-Cube Filter with 2 filter stages
Impact filters + depth filter inside
- Cardboard box filter made from recycled material dimension
w 0,8 x l 1,2 x h 2,1 m³
- 2nd Generation one type for
primer and topcoat

→ SUSTAINABLE

2. Stage:

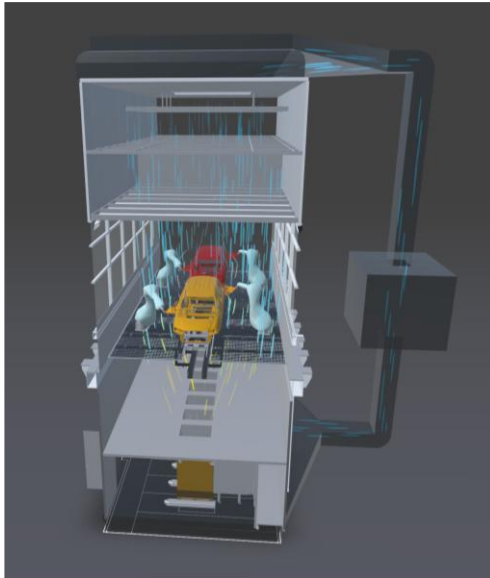
- 2 pocket filters
- F7 air quality

Module technology:

- Dampers – decoupling of
ducting while exchanging
filters
- Possibility to show HMI,
locking, roller beds

E-CUBE

FILTER TECHNOLOGY



E-Cube system

Enabler for efficient recirculation and exhaust air cleaning

Less than 10 % fresh air possibility to concentrate VOCs (RTO)

No water

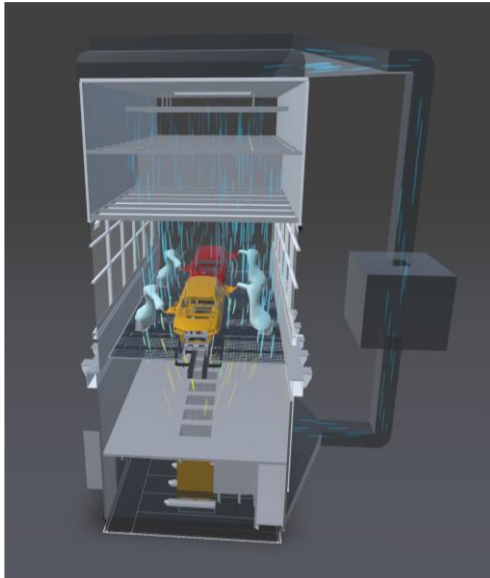
“No condensation + humidification” necessary huge potential of energy savings

No additives

No agglomerating agent, no pre-coating agent

E-CUBE

FILTER TECHNOLOGY



The E-Cube System can be implemented in almost every plant (shade of Spray booth).

SIMPLE

Modular system to install and maintain as a part of ducting.

SUSTAINABLE

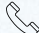
Cardboard box filter made from recycled material enabler for efficient thermal post-cleaning (TO).


EFFICIENT


No additives, only full filters out, Filter efficiency (F7, high capacity, low pressure loss, air circulation system and uninterrupted production.

WE LOOK FORWARD TO WORKING WITH YOU!

Eisenmann GmbH
Tübinger Straße 81
71032 Böblingen
Germany

 +49 7031 78 0

 info@eisenmann.com

 www.eisenmann.com

Management:
Matthias Haarer
Normen Lamb
Jochen Straub

DUNS-Nr.:
34-305-7528

**Commercial Register of the
Local Court Stuttgart:**
HRB 796180

